



# E-211

INT

Interior doors



# E-211 INT

Painted version



Since 1987, Dynaco has been at the forefront of high-speed roll-up door innovation. Inspired by flexible pool covers, we introduced the first self-repairing door—revolutionizing the industry with our unique zipper technology. Today, Dynaco doors are trusted by professionals across five continents, delivering reliability, efficiency, and safety in every application.

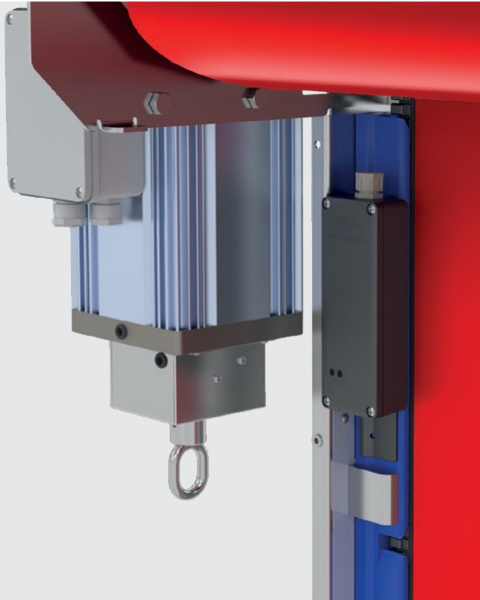
**The Dynaco E-211 INT is a compact high-speed roll-up door designed for efficient operation in space-constrained environments.**

It features a fully flexible curtain with a soft bottom edge for enhanced safety and sealing performance.

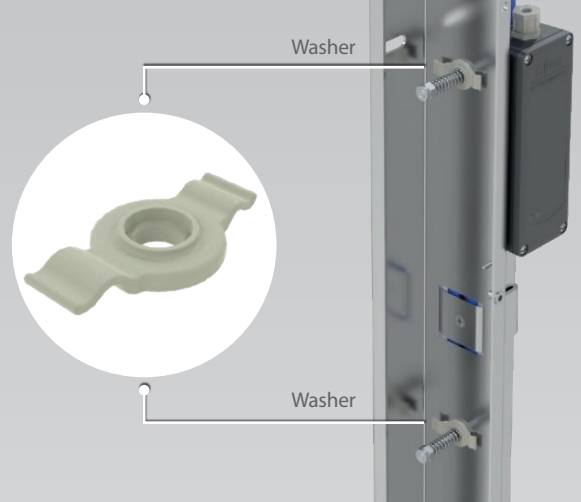
The door's self-reinserting design, equipped with a zipper curtain and a classic reintroduction system, ensures reliable functionality and minimal downtime.

Ideal for businesses seeking a space-saving, energy-efficient, and user-friendly solution, the Dynaco E-211 INT offers a practical balance of performance and affordability.

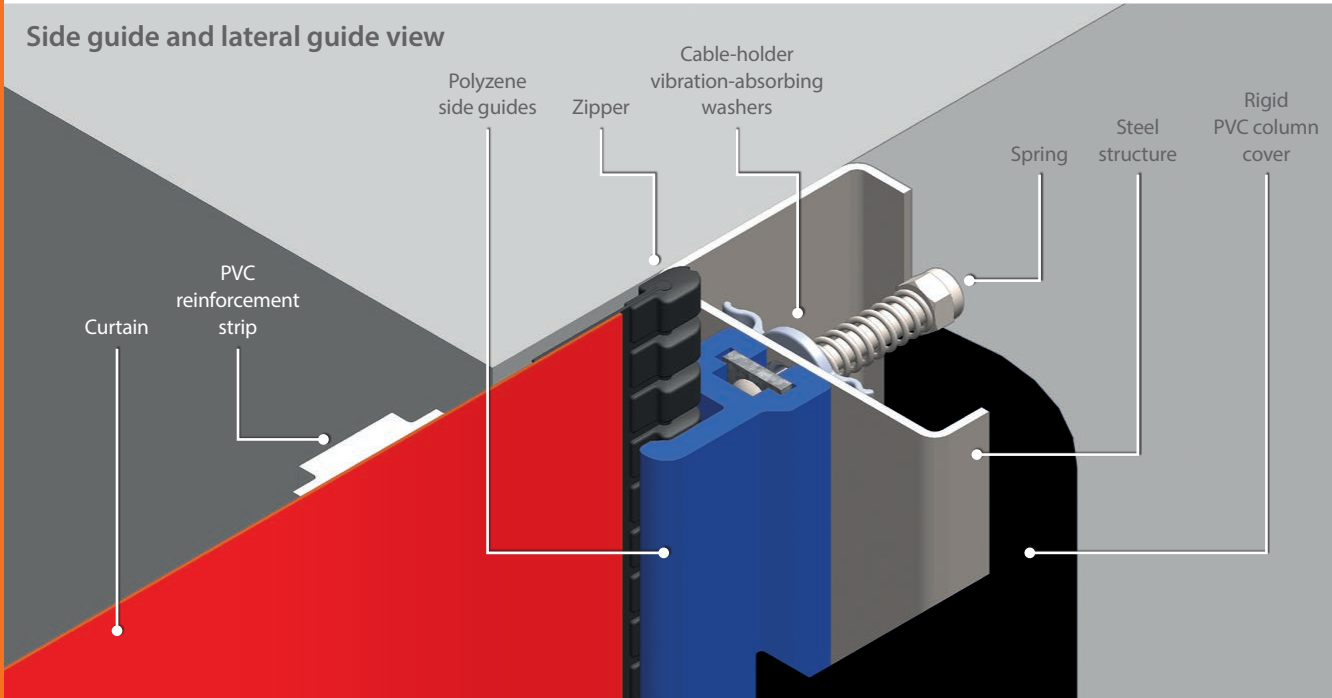
SLE



Cable-holder vibration-absorbing washers



Side guide and lateral guide view



In rapidly changing and complex times, financial savings and safety has never been more important. We understand that businesses increasingly need more cost-effective entrance solutions that still meet all their operational needs.

For many customers, however, entrance solutions have been made to specifications far higher than they actually require. Not all environments need such high-end solutions, but these have been the only choice - which costs time and money. Until now.

Dynaco's new range of E-Line doors is our response these challenges, meeting and exceeding expectations of entry-

level doors. The E-Line range opens up new opportunities for safety, security and operational efficiency, but at a price that works.

The range has been designed with one objective in mind: simplicity. Without the overly complex specifications of other doors within the category, they present a more affordable choice, but not at the expense of the quality you expect from a world leader in entrance solution technology. With E-Line, everything is easy.

Easy installation. Easy operation. Easy maintenance. This is performance made simple. This is Dynaco.

## Why these are the right doors for your business?



### Gravity

Utilizing a gravity system, our design incorporates weights in the bottom edge to ensure smooth and controlled closing. Combined to a light curtain safety device, this feature guarantees seamless door closure, prioritizing safety and efficiency in all conditions.



### Wind-resistant

Our doors offer wind-resistant operation, up to wind load class 4.



### Fully flexible curtain

A fully flexible curtain, without any rigid elements, ensures optimal user safety.



### Light Curtain

At Dynaco, safety is paramount. Employing a self-testing light curtain, our systems uphold the highest contactless safety standards. Paired with a soft bottom edge, this cutting-edge feature delivers unparalleled protection and reliability. Safe for people and goods.



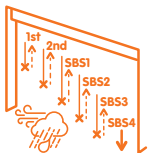
### Energy-saving

All Dynaco high-performance doors are designed to deliver the best possible sealing properties and minimal opening/closing cycle. Their dynamic barrier significantly reduce energy costs.



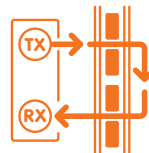
### Reduced maintenance cost

With technical features such as our self-reinserting system, soft bottom edge and our frequency converter technology, Dynaco doors help you keep maintenance at a minimum.



### Step-by-step closing (patented)

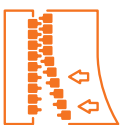
Our doors feature a step-by-step closing system that ensures secure operation even under high wind pressure. When a pressure on the curtain is detected, this gravity door system methodically closes the door in stages, maintaining safety and reliability at all times.



### SLE

The unique, patented Safety Linear Encoder (SLE) detect possible obstacles and keep monitoring the position of the curtain during operations.

## Why Dynaco?



### Automatic self-reinsertion

At Dynaco we invented the crash-forgiving, self-reinserting door. The one and only original. Its curtain automatically reinserts when dislodged, without intervention. This means: no repair costs, nor costly production downtime.



### Frequency converter

Dynaco doors operate with the most advanced drive unit in the industry. The combination of a frequency-driven motor and encoder offer smooth operation and reliability. Any wearable elements are reduced to a minimum.



### Sleek, attractive design

Our doors' compact, sleek and minimalist design fits perfectly in any type of building architecture.



### Comfort of use

Dynaco doors are suited to a wide range of applications. Thanks to our different opening options and certified safety-devices, you are safe whenever you cross a Dynaco door.



### Certified performance

Performance of all Dynaco doors has been tested and certified by a third-party notified body.



### Conform to EN norms

All Dynaco doors are completely conform to EN13241-1.



Dynaco offers a wide range of products for several industrial applications.  
Find out more on [www.dynacodoor.com](http://www.dynacodoor.com).

# E-211 INT



## E-Line Performance made simple



Dynaco Europe NV  
Waverstraat 21 B-9310 Moorsel-Aalst (Belgium)  
Tel. +32 53 72 98 98 [info@dynacodoor.com](mailto:info@dynacodoor.com)  
[www.dynacodoor.com](http://www.dynacodoor.com)

#### About Dynaco

Dynaco is the world leader in high speed door technology, offering state of the art solutions for both commercial and industrial applications. Founded in 1987, we have extensive expertise in high-performance doors. Yet we continue to invest in exceeding your expectations of quality and performance. Our network of certified and dedicated partners ensures optimal service to all our customers across Europe. Dynaco is a proud member of the ASSA ABLOY Group, the global leader in entrance solutions. As part of its Entrance Systems division, we share the same mission and corporate values: helping billions of people experience a more open world every single day, through solutions for efficient and safe flow of goods and people. These include a wide range of automated pedestrian, industrial and residential doors, loading dock equipment, perimeter fencing and service.