

**ster**til®  
**DOCK**  
P R O D U C T S

DOCK LEVELLERS

# P-Series

Advanced ergonomics:  
horizontal lip  
in all positions



**STERIL**  
SUPERIOR SOLUTIONS

# Superior Solutions



Stertil Dock Products provides quality, customised and technically advanced loading bay dock equipment solutions throughout the world. The best possible service is also offered from skilled local partners. These superior solutions are conceived, developed and implemented by a team of professional specialists with unique expertise. Thanks to the quality of its people, its totally in-house production process and its international organisation, Stertil Dock Products is a leading international quality supplier of loading bay dock equipment.



## Smooth-running loading and unloading

The Stertil P-Series dock leveller offers superior ergonomics thanks to the hinged lip which always maintains a horizontal position when deployed. No other dock leveller provides such a smooth and simple transition from loading bay to vehicle as the P-Series, thanks to this unique and innovative patented parallelogram lip mechanism. Even a ball can sit without moving on the lip while it is being raised or lowered. This unrivalled ergonomic design results in smoother loading and unloading, which subjects personnel and handling equipment to less physical impact. Moreover, the design significantly reduces vibration and noise. With a dynamic load rating of 6 tons and an extensive range of platform sizes, the P-Series is suitable for use in almost any loading dock situation. It is especially suitable for pallet trucks with



low levels of ground clearance, and the 8/10 platform surface enables the use of 3-wheel forklift trucks.

## Optimum safety

The P-Series meets the EN 1938 safety standards. In case of premature vehicle departure (if the forklift truck is still on the leveller), the automatic panic-stop activates. The leveller in most cases remains in operation even after a panic-stop situation. The emergency stop button on the control box can also be operated at any time. The platform can tilt 125 mm to both sides without influencing the functionality of the centre positioned robust main cylinder and, therefore smoothly following the movements of the truck. During maintenance, the platform is held safely in position by means of a special maintenance

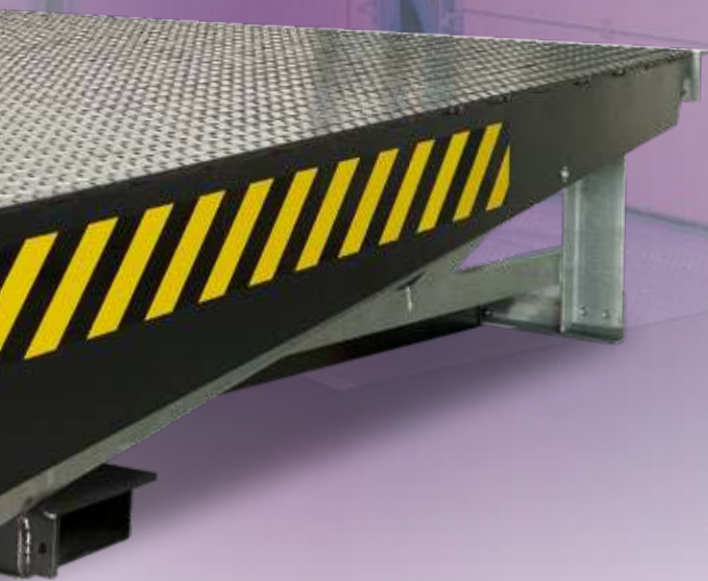
strut. When the platform is in parked position, it is automatically supported by two cross-traffic safety legs.

## Advanced but simple control

Practicality and safety go hand-in-hand with the P-Series advanced control system. The dock leveller can be positioned perfectly at the touch of a single button. There are several advanced control options which provide additional functions: door control, shelter control, auto park, automated interlock to prevent operation when the dock door is not fully open, and automatic door closure locking until the leveller has been parked correctly. Traffic lights, dock lighting and wheel lock systems can also be connected to the dock leveller control.



# Advanced ergonomics: horizontal lip in all positions



Unique open lip hinge



One hydraulic (main) cylinder



The platform can tilt 125 mm at both sides



Two safety legs



Horizontal lip in all positions



Closed rear hinge

## Improved efficiency

Thanks to the P-Series dock leveller's exceptionally smooth loading and unloading, there is practically no risk of grounding even with low clearance trucks. The severely reduced impact ensures that the risk of damage to goods during loading is minimal. Most importantly, it also ensures that loading equipment is subject to less wear and tear, thereby considerably increasing operating life and cutting maintenance costs. Significant cost savings can also be achieved by reduction of absenteeism among staff due to sickness or injury; this is because they are able to carry out the same work more comfortably and with less physical exertion.

# Excellent with regard to ergonomics and efficiency

## Standard sizes

Theoretical ranges for "standard" PP - PF Series.

Dynamic capacity PP - PF 6 tons						
Lengths (mm) excluding lip	Working range (mm)* above dock		Working range (mm)* below dock		Frame height (mm)	
	PP	PF	PP	PF	PP	PF
2000	195	215	254	265	585	700
2200	190	220	235	395	585	700
2500	270	245	225	335	585	700
2800	295	300	215	370	585	700
3000	265	270	215	360	585	700
3500	360	360	295	295	700	700
4000	370	370	280	280	700	700
4500	335	335	275	275	700	700

Platform width (mm) 1750, 1830, 2000, 2110, 2250

\* Calculated with a 400 mm lip and 100 mm bumper projection

P = Pit Installation, F = Frame Installation

## Extensive choice of sizes

The P-Series offers numerous possibilities customised to your dock for most efficient use. The length of the platform will primarily be determined by the height difference between the warehouse floor and the expected range of truck beds. Steril bases its sizes on a lower maximum incline than is permitted by EN 1398 Directive, in order to guarantee smoother loading and unloading with less physical strain. We would be happy to advise you about the most efficient sizes and designs at the early stages of dock planning.



Advanced control box



## Technical specifications

- The platform, beams and lip are manufactured from high tensile steel (S355J0 / STEEL 52). Both the platform and the lip have a tear plate surface (8/10 mm and 13/15 mm respectively), making them suitable for 3-wheel forklift trucks.
- The lip length is 400 mm as standard with an 80 mm chamfer on the front edge.
- All frame components are galvanised. Platform, lip and frontangle are black RAL 9011. Standard protection is an anti-corrosive coating and paint finish of 80 micrometres total thickness. Special colours are available upon request.
- The unique design includes a central (main) cylinder, front-mounted for maximum lifting efficiency, a lip hinge with a parallelogram mechanism, a closed rear hinge, and automatic safety legs with damping rubbers.
- Wide choice of control box functions with numerous options, such as integrated operation with the dock door or shelter.



Below Dock Control



## Options

- Fully hot-dip galvanizing of the leveller.
- Draught-excluding brush or rubber seals between the platform and pit walls.
- Various dock bumpers (rubber, PE or movable).
- Thermal insulation under the platform.
- Noise-reducing anti-slip coating (up to 10dB noise reduction) on the platform and lip.

## Installation

The P-Series can be installed with a base-supported frame (PP) in a closed pit, or a suspended frame (PF) in an open pit. Both types of installation are simple to carry out. Stertil can provide all the necessary information for construction and installation including drawings.

## Stertil's complete programme of products for superior solutions




- **Dock levellers**  
P-Series | X-Series | S-Series | LA/HA Series (mini)
- **COMBILOK® Vehicle Restraint System**
- **Inflatable & Curtain Shelters**  
WI/WIS 300 Series | TP/TI 1000 Series | W-500 Series
- **Accessories**  
Dock bumpers | Wheel guides | Dock lights | Traffic lights


## Further information

For more information about the P-Series and other dock levellers, dock shelters, dock houses, vehicle restraint systems etc, please feel free to contact us. We will be happy to assist you with individual advice to provide you with a superior solution.



Stertil B.V.  
P.O.Box 23  
9288 ZG Kootstertille  
The Netherlands  
Tel. +31 (0)512 334444  
www.stertil-dockproducts.com  
dp@stertil.nl

 Stertil Dock Products  
 /Stertil-b-v-  @Stertil

 a member of the Stertil Group