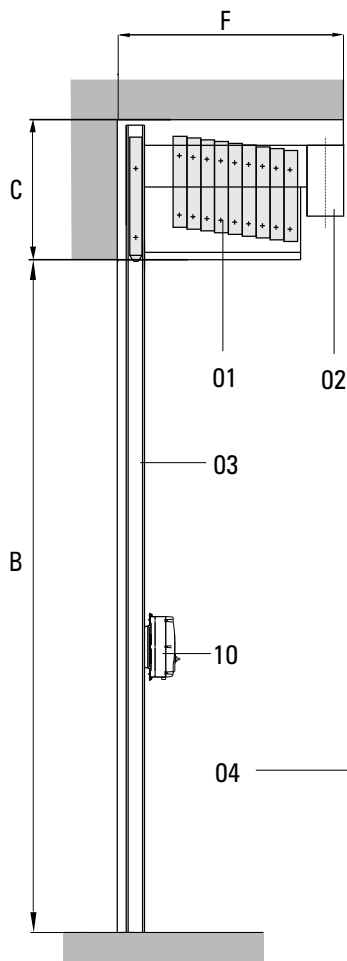


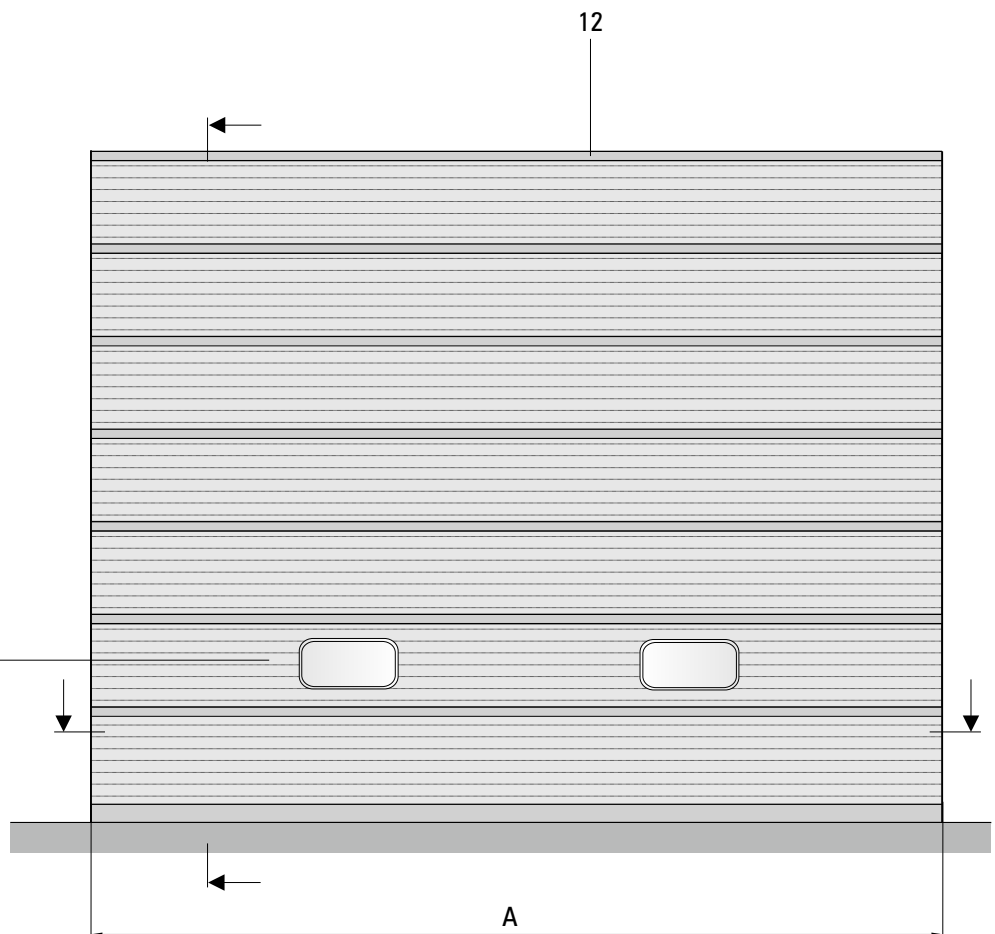
Technical Data

Stacking Doors SPACELITE® HT 150 and HT150XL

Vertical section
 Door open

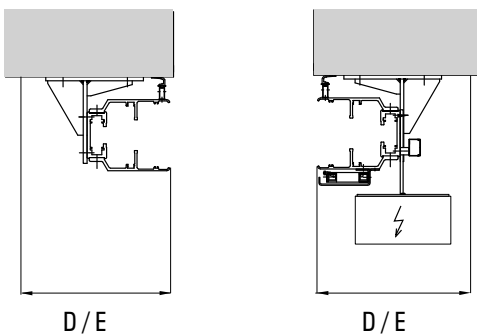


Exterior view



Horizontal section

Mounting and Fixing Modes
 Assembly behind the reveal



Dim./ Pos.	Technical Data Spacelite®		HT150	
	Technical state July 2019		HT150	HT150XL
A	Door dimensions [mm]*	Width min. / max. (extra width upon request)	2000 / 15000	4000 / 15000
B		C/o height min. / max. (extra height upon request)	2000 / 6000 / (9000)	3000 / 16000
C	Required lintel height [mm]*	Min. / max.	1360	1600 / 2000
D	Lateral space required [mm]*	Drive-unit side min. / max.	380	1340
E		Non-drive unit side min. / max.	380	400
F	Required space for the door cassettes [mm]*	Required room depth depends on door height and type of cassette	1720 / (2500)	2935 / 3100
	Door panel height [mm]	Approximate value (min dependence on the door type minor deviations are possible)	1000	1000
	Max. panel weight [kg]		2400	5000
	Opening speed [cm/s]*	Relay- respectively contactor- / or frequency converter; up to	10 / -	10 / -
	Opening cycles / operating time*	Door cycles, usually up to annually for contactor- / or respectively frequency converter control (SDS25, SDS40)	30000	15000
		Maintenance interval, after max. door cycles or after interval	6000 / 1 year	approx. 1-2 / year****
	Values for respec. relay- / contactor / frequency converter control Cycle: Opening and closing = two load alternations	Number of cycles, on average [1 / hour]	5 / 5	upon request****
		Increased number of cycles over max. 1 hour [1 / hour]	10 / 10	--
		Increased number of cycles over max. 15 minutes [1 / min]	-- / --	-- / --
	Wind load*	Classification according to DIN EN 12424**	2 - 5	2 - 5
	Air permeability	Classification according to DIN EN 12426**	2	2
	Resistance to water penetration	Classification according to DIN EN 12425**	2	2
	Airborne sound insulation Rw (C;Ctr) [dB]	According to DIN EN ISO 717-1**		
	Operating forces / safe opening	According to EN 13241-1	fulfilled	fulfilled
	Burglar resistance	Resistance class 3 according to DIN V ENV 1627	□	□
	Thermal insulation value Ud *	Door-related Ud-Value attainable [W/m²K]	1.3	1.3
01	Cassettes	Steel, galvanised	■	--
		Steel, hot-dip galvanised	□	--
		Steel, primed and varnished	-	■
02	Drive unit	Worm gear motor incl. brake	--	--
		Worm gear motor incl. brake and integrated anti-drop device	--	--
		Spur wheel back-geared motor incl. brake	■	--
		Hydraulic drive	--	■
		Driving power [kW]*	3 kW	upon request
03	Tracks vertical	Aluminium profile closed on three sides	■	■
	Surface	Blank	■	■
		Anodised E6 / C-0 (EV1)	upon request	upon request
		RAL colour coated	upon request	upon request
		Anodised according to British Standard	upon request	upon request
04	Door panel with fibreglass filling	Thickness of the twin-walled fibreglass panels [mm]	150	150
		Fibreglass colours brilliant / emerald / sapphire	■	■
		Insertion foils for the improvement of the thermal insulation value	□	□
		Inside with PVC-profiles (similar to RAL 7047) for the improvement of the thermal insulation value	--	--
		Fibreglass for humid areas, closed by lamination on the front (refer to car wash option)	--	--
		Vision panel made of insulated pane of glass /size w x h [mm]	□ / 800x400	□ / 800x400
		Up-value of the fibreglass panel with max. amount of insertion foils [W/m²K]	0.83	0.83
		Fibreglass light transmittance up to (light transmittance depends on colour and Up-value)	20 - 55%	20 - 55%
		Fire behaviour according to EN13501 / building material grade according to DIN 4102	E / B2	E / B2
05	Real glass door panel	With 1 - 2 vertical transoms, depending on door width	--	--
	Insulating glass filling (1,1 W/m²K) made of 2x4mm tempered safety glass and thermally insulated profiles	without vertical transom (door width Ls max. 3,98m)*	--	--
06	Vision panel with plastic glazing, incl. 1-4 vertical interspacers, depending on door width (other fillings available upon request, thickness up to 4 mm)	PC Makrolon	--	--
		PMMA (Plexiglas)	--	--
		Perforated plate RV5-8	--	--
		Single glazing made of tempered safety glass 1 x 4 mm	--	--
07	Other fillings	Sandwich d=40mm	--	--
		Sandwich d= 60mm	--	--
	For types HT180/ HT200 dry glazing instead of fibreglass	Other fillings	--	--
08	Emergency opening	With crank handle	--	--
		With hoist chain	■	--
		With battery	--	□
		With uninterruptable power source UPS	upon request	upon request
10	Door control Drive-unit side	BDC E800 R / S Relay- or respectively contactor control, power connection 400 V/50 Hz (L1,L2,L3,N,PE), pre-fuse 10 A C-characteristics, only type B residual-current circuit breaker	■	--
		BDC E800 F - frequency converter control for soft start and a higher opening speed, power connection 230V / 50Hz (L1,N,PE), pre-fuse 16A C-characteristics, only type B residual-current operated circuit breaker	--	--
		4 kW frequency converter control power connection 400V / 50Hz (3,N,PE), pre-fuse 16A C-charac-teristics, only type B residual-current operated circuit breaker	--	--
		Special control system for hydraulic drive, power connection 400V / 50 Hz, connection data upon request	--	■
11	Safety	Approved by the German technical surveillance agency (TÜV), integrated in the track with mechanical overload protection	■	■
		Optoelectronic safety edge control with power supply via energy chain or busbar respectively	■	■
		External photo eye	□	□
		External light curtain	□	□
		Laser sensor	□	□
		Anti-opening protection	■	-
12	Surface	Blank	■	■
	Door panel profiles made of aluminium	Anodised E6 / C-0 (EV1)	Visible hand guard foil, anodised only	
		RAL colour coated	upon request	upon request
		Anodised according to British Standard	upon request	upon request
	Options	Car wash set (FR / NR)	--	--
		Lintel cover made of fibreglass	upon request	upon request
		Door canopy in case of outdoor installation	--	--
		Lateral swivelling part with or without pass door to enlarge the overall passage opening	□	upon request
		Vertically opening (vertical door) or track extension respectively	upon request	upon request
		Horizontally movable tracks between two door systems to provide larger passage widths, can be combined to achieve extra-large widths	□	upon request

* Depending on door size and equipment
 ** Test certificate and test report are available respectively
 *** guide value, the value may differ, i.e. it may be much higher or lower depending on the operating conditions.
 **** Max. door cycles depend very much on the height of the door (run time; oil heating; locale climate; cooling)

■ standard
 □ available
 -- not available

NOTE: Not all options may be combined