



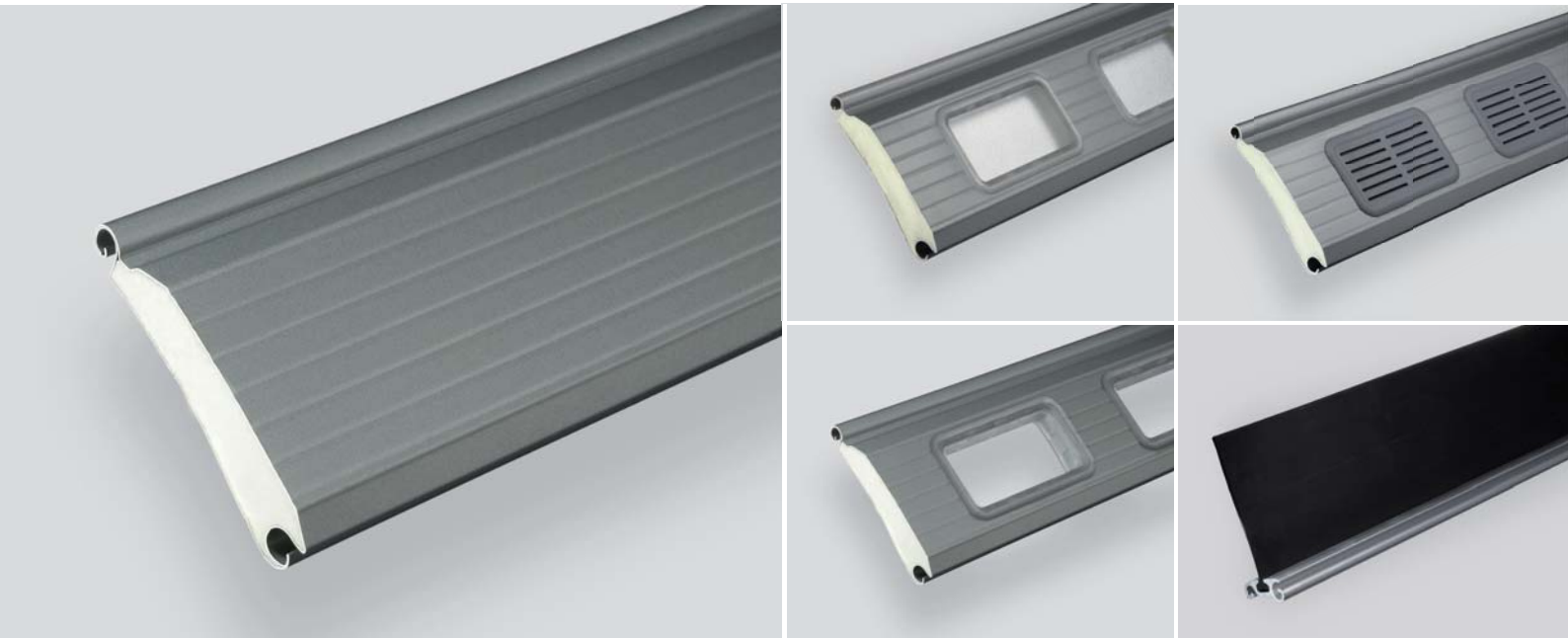
Roller door profile 1.95 R

for light and
heat-insulating roller shutters.

ferdinand
braselmann.de

Vielfalt mit Profil

Roller door profile 1.95 R



1.95 R is an insulated roller shutter profile with the outstanding feature of reduced weight. The standard lath in 0.38 mm galvanized steel with transparent coating is comparable in weight to a 1.100 D aluminium lath.

Thanks to the slightly curved form, this profile moves very quietly.

Available with coloured coating in all RAL-colours or coil coating in colours like RAL 3000, 5010, 6009, 7005, 7016, 7044, 8014, 9002, 9006, 9007 and 9016.

The recommended choice for roller shutter doors especially when low self-weight and small bale diameter are required.

• technical details

insulated PU-filled profile

material: 0.38 mm galvanized steel
0.47 mm aluminium

slats on 1 m height: 10.1

thickness of slats: ca. 23 mm

• weight

steel: ~ 0.93 kg/m (9.8 kg/m²)
window profiles: ~ 10.6 kg/m²

aluminium: ~ 0.47 kg/m (4.9 kg/m²)
window profiles: ~ 6.8 kg/m²

• maximum door size at wind class 2 (without storm hooks)

steel: W 6500 mm x H 6000 mm

aluminium: W 5000 mm x H 4500 mm

• calculated bale diameter

opening height	tube diameter			
	133 mm	159 mm	194 mm	219 mm
2 m	300 mm	310 mm	340 mm	360 mm
2.5 m	340 mm	360 mm	350 mm	360 mm
3 m	360 mm	370 mm	380 mm	400 mm
3.5 m	380 mm	390 mm	380 mm	400 mm
4 m	400 mm	390 mm	420 mm	430 mm
4.5 m	420 mm	420 mm	420 mm	430 mm
5 m	420 mm	420 mm	450 mm	440 mm
5.5 m	460 mm	420 mm	460 mm	480 mm
6 m	460 mm	470 mm	470 mm	480 mm
6.5 m	490 mm	470 mm	500 mm	520 mm

(If a sealing strip is applied the bale diameter increases for at least 20-30 mm)