

Horizontal, fast, safe.

High-speed doors

**NOVOSPRINT®**

BUTZBACH - THE DOOR COMPANY.®





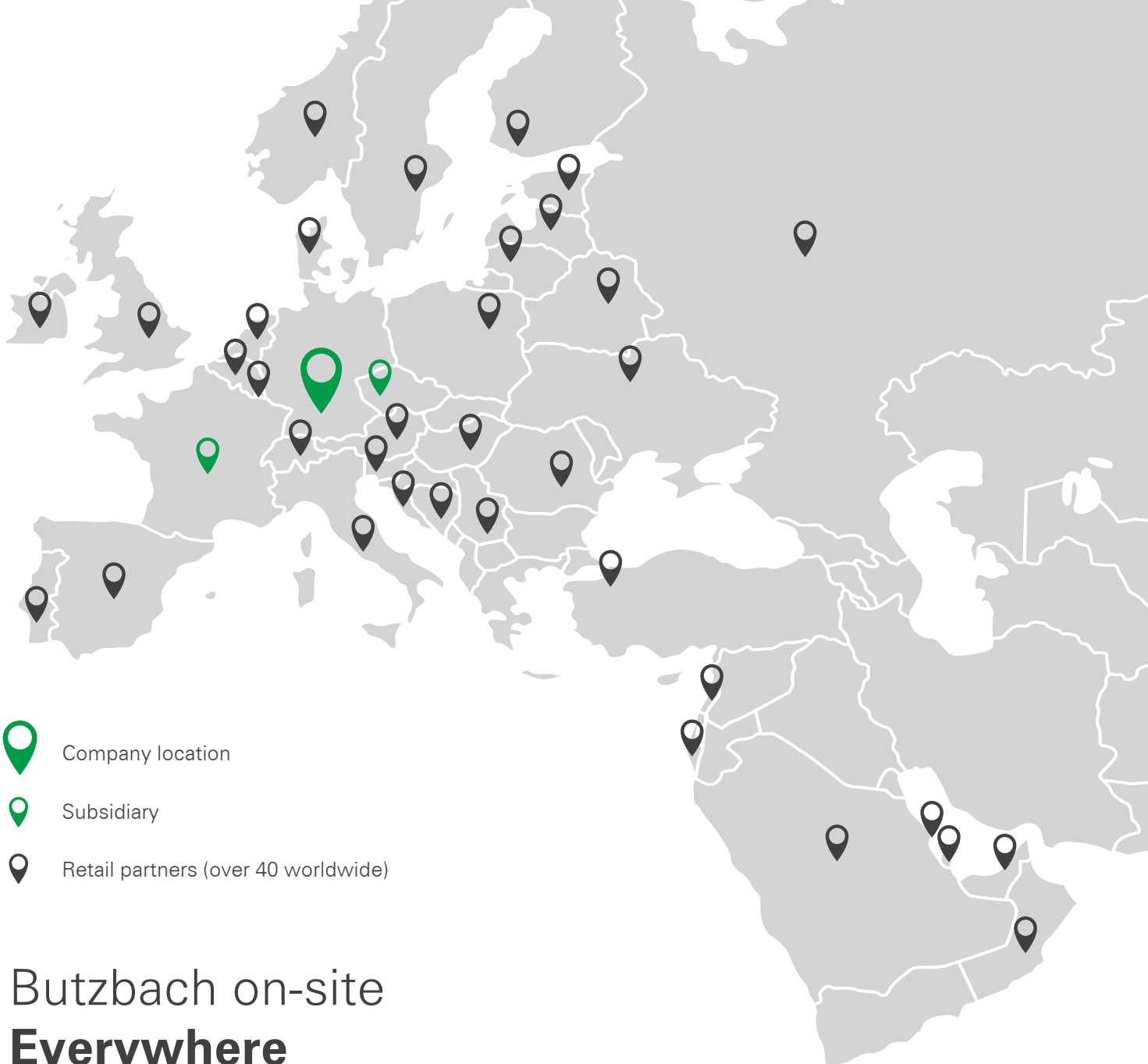
# The right solution for every situation

Butzbach is a German family-owned company founded in 1953 and is now being managed by the second generation. With over 350 employees, we are the specialist for industrial and hangar doors.

We have developed a high-speed door where the door skins open laterally instead of rolling upwards. The complete opening is clear in just a few seconds. This principle is superior to standard doors in many dimensions: thanks to flexibility in adapting to your requirements, protection against collision, highest reliability and lasting efficiency.

You also benefit from our wealth of experience and a complete service from a single source. From the first step to planning, commissioning and service, Butzbach provides full support throughout the entire lifecycle of your door!





Company location



Subsidiary



Retail partners (over 40 worldwide)

## Butzbach on-site **Everywhere**

### **Germany**

Our company is based at two locations in southern Germany, combining established local roots with a cosmopolitan attitude and innovative spirit. Here we have highly qualified employees and a network of reliable suppliers at our disposal. Our support based in 25 sales regions across Germany guarantees direct support wherever you are.

### **International**

Butzbach has made a name for itself as a specialist developing and manufacturing industrial doors. For decades, our doors have been providing daily reliable service at many companies worldwide. Our qualified partners ensure local support, the highest service quality and customer proximity.

# Proven to work in practice worldwide

## High-speed doors **NOVOSPRINT®**

### **Gingen an der Fils (DE)**

BOSIG GmbH

Several NOVOSPRINT® high-speed doors are combined with Butzbach outside doors. The high-speed door supports efficient intralogistics. At the end of the working day, stacking and sectional doors ensure the building is securely closed.



### **Amsterdam (NL)**

Schipol Airport

The Airport has installed numerous NOVOSPRINT® doors to enable baggage carts to get from the airfield to the distribution area in a continual cycle without delays.



### **Figaec (FR)**

Ratier-Figaec

Goods can easily be transported between two separate areas using industrial trucks and cranes thanks to customised cut-outs for the crane rail.



### **Dubai (AE)**

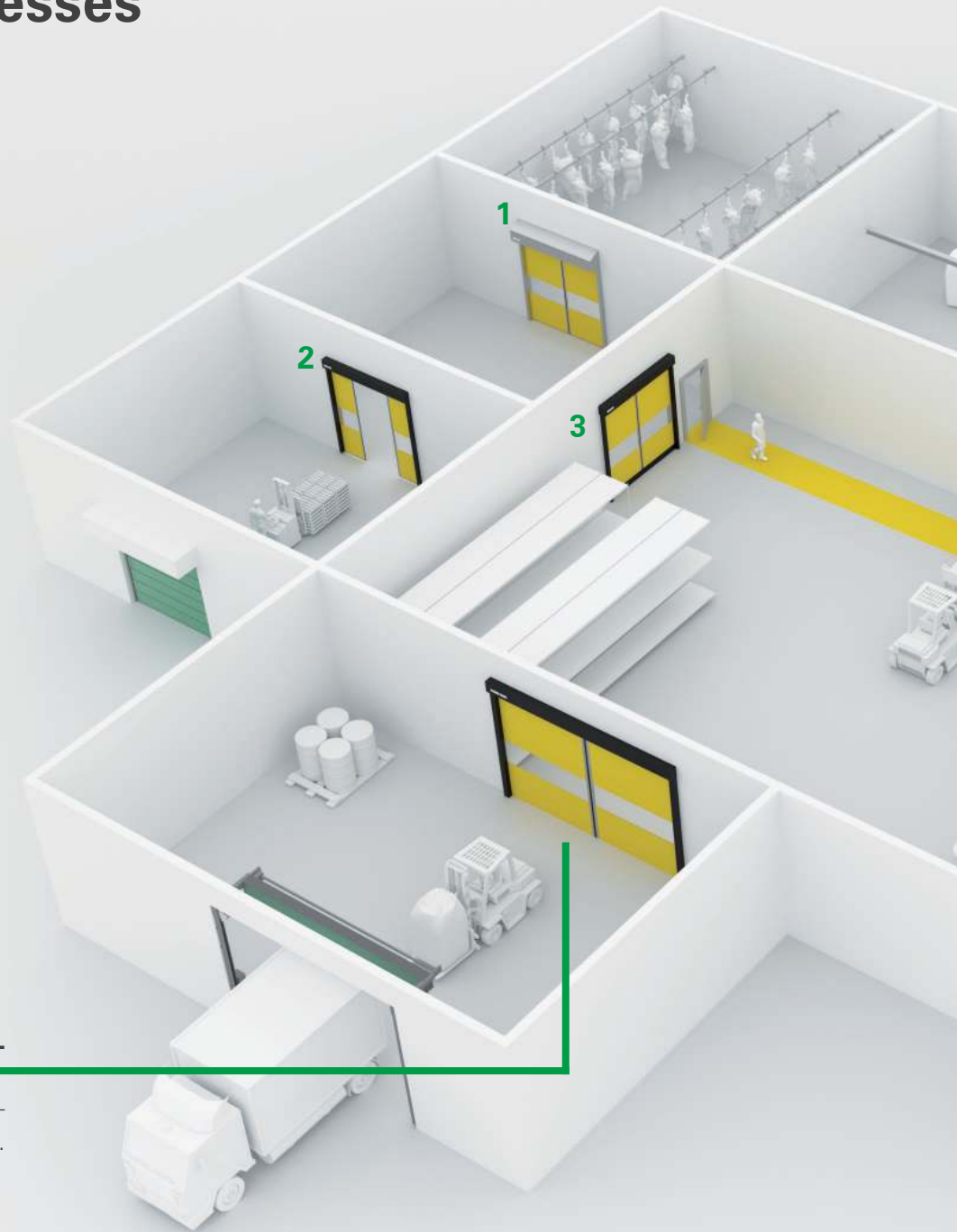
AUDI Centre

There are more than 20 Butzbach doors installed in the largest AUDI Centre worldwide. Besides the high-speed doors in the workshop area, Butzbach outside doors are also in use.



# The ideal door range for your processes

The side-opening NOVOSPRINT high-speed doors are the optimal solution for any operational situation.



## NOVOSPRINT® SyncroXL

Fast, even for large openings – up to 9 m width and 6 m height.

### 1 Hygiene

For the pharmaceuticals, food and health sector.

### 2 Sprint

Ultra-fast with top speed up to 5 m/s.

### 3 Ground closure

Completely sealed against draughts, dust and pests.

### 4 Crane rails

With precisely customised cut-outs for crane traffic.

### 5 Double-skinned

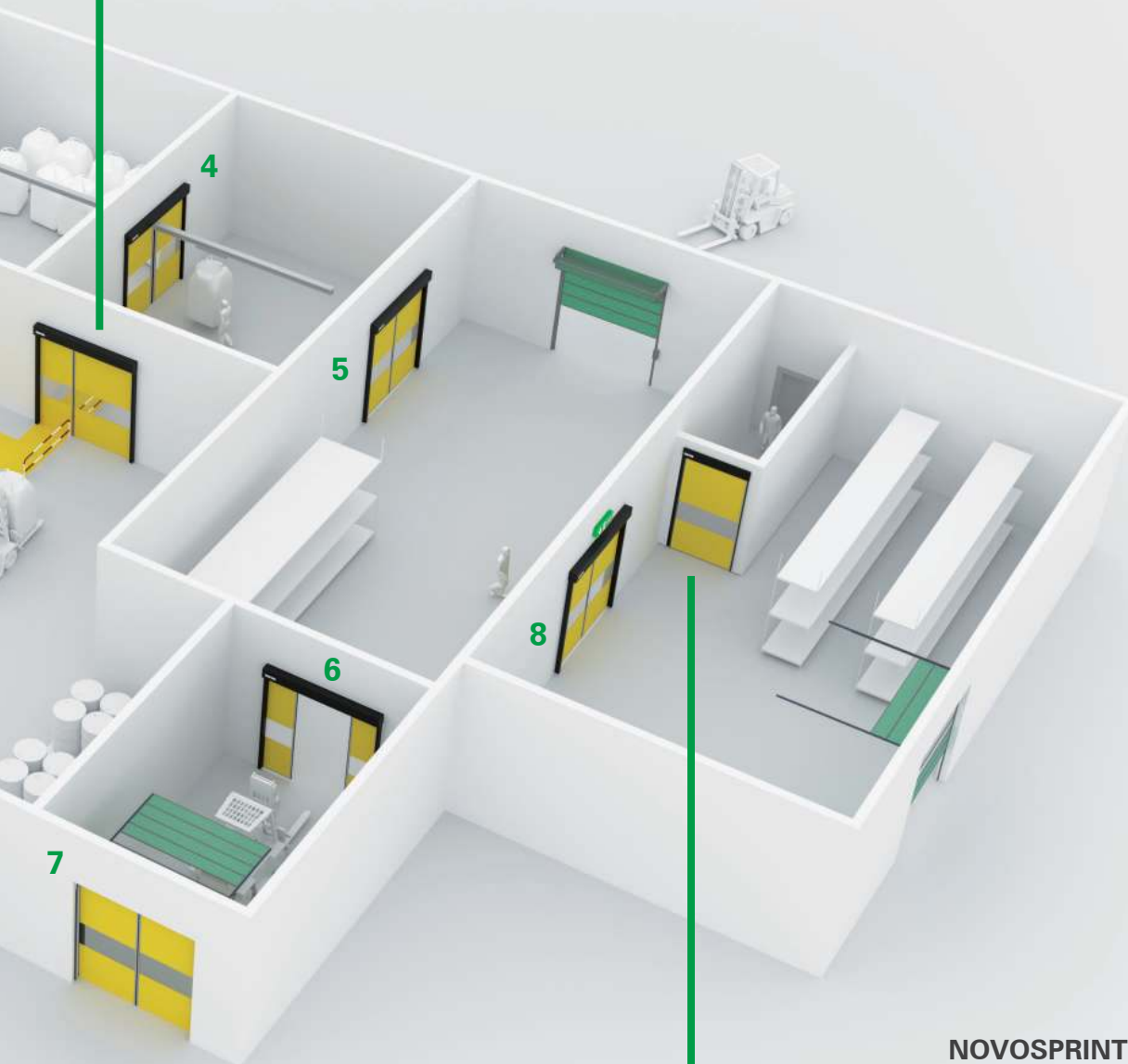
Improved thermal and sound insulation thanks to 25 mm air cushion.

### 6 Airlocks

Short opening times for unhindered and energy-conscious transit traffic.

## NOVOSPRINT® Duo

One wall opening – two independently activated door wings for different transit traffic.



## NOVOSPRINT® Mono

Specially designed for narrow passages: the one-sided rolling high-speed door.

### 7 Combination

Combined protection for high-frequency outside doors.

### 8 Escape routes

NOVOSPRINT meets the requirements of TÜV SÜD and DGUV.

# The right door for your processes

The NOVOSPRINT door series is still based on the basic principle of horizontal opening to this day – realised with the latest technology and high-quality materials. This makes NOVOSPRINT the ideal solution for all who place a high value on efficiency, profitability and reliable protection. The company also offers a wide range of the latest pulse transmitters, control options and individual equipment variants.



## NOVOSPRINT® Syncro

The Butzbach classic in matters of design with the horizontal opening principle, this high-speed door features the latest generation of technology. Both door wings open simultaneously by spring force, rolling up into a compact upright profile. Thanks to the "Sprint" add-on, the door achieves a top speed of up to 5 m/s. A reliable electric motor closes it immediately.





# NOVOSPRINT®

## Syncro L / XL

Fast, safe, trouble-free: even for large openings you can rely on all the advantages of NOVOSPRINT. Doors up to 9 m width and 6 m height can be installed for very large vehicles and rail vehicles.

# NOVOSPRINT®

## Mono

The space and time-saving solution for un-hindered and contact-free pedestrian traffic. NOVOSPRINT Mono was specifically designed as a one-sided rolling high-speed door for narrow passages. It is extremely safe compared to swing, revolving or sliding doors with fixed leaves.



# NOVOSPRINT®

## Duo

NOVOSPRINT Duo has two independently activated door wings in one opening. It is ideal for separating vehicle and pedestrian traffic for safety reasons or for creating a two-lane forklift route.

# The door to new possibilities



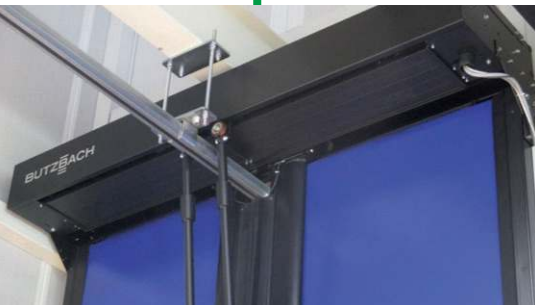
## Ground closure

As soon as the door stops, the wings are lowered to the floor. Pests like insects and small rodents are kept out, as well as draughts and dust. This works with almost every ground condition, because the flexible sealing lip compensates for unevenness in the floor surface.



## Sprint

Equip your NOVOSPRINT Syncro high-speed door for high performance. The Sprint model achieves a top opening speed of up to 5 m/s by spring force. You can also maximise the closing speed up to 2.5 m/s with an additional light curtain. This option is ideal wherever fast, agile vehicles are working in small spaces, such as forklift traffic.



## Crane rails

For many production processes goods are transported in containers like Big Bags on crane rails. If you need to separate two areas without stopping the flow of goods, we can adapt your high-speed door with a precise cut-out. In contrast to vertical doors, the side-opening principle of NOVOSPRINT is perfect for this application.

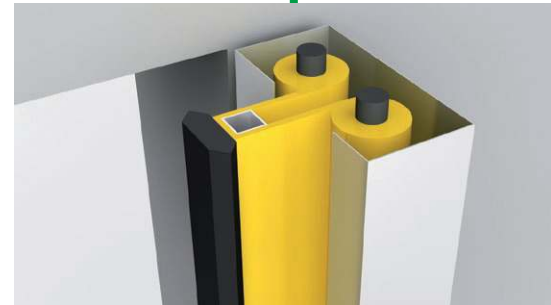


## Hygiene

Whether for the pharmaceuticals, food or health sector: with different hygiene options, NOVOSPRINT meets all specific rules on cleanliness, porosity, corrosion resistance, food safety and many other requirements. Discuss your individual needs with your Butzbach consultant – and get a solution perfectly tailored to your requirements.

## Double-skinned

In its basic design with one door skin NOVOSPRINT provides enough protection for most cases. If there are higher requirements on thermal or noise insulation, double-skinned door wings can be fitted. This produces a 25 mm-thick air cushion, improving both thermal and noise insulation.



## Escape routes

Escape and emergency routes must open quickly in all situations, even in the event of power failure. NOVOSPRINT meets these requirements as certified by TÜV SÜD and reliably in accordance with DGUV. As the doors open using spring power, they are not dependent on the power supply. They are activated by a certified, fail-safe radar motion sensor. It is checked automatically every 24 hours to ensure it is functioning properly.



## Airlocks

The internal flow of goods often passes through climate airlocks due to major temperature differences. This creates transition zones with one door at each end. The NOVOSPRINT advantage: thanks to the short opening times of the doors, waiting times for people and vehicles in the airlock are reduced to a minimum or omitted entirely.



## Combination

This hybrid solution creates optimal conditions for operating and rest periods. It combines the high-speed NOVOSPRINT door designed for high cycle times and high speed with a well-insulated solid outside door. During peak periods only the high-speed door is active. When everything is idle, the outside door guarantees secure building closure with perfect thermal insulation.



# High quality High performance

Butzbach industrial doors ensure smooth workflows and efficient operating processes. The low-wear door technology and the high "Made in Germany" quality deliver the proverbial Butzbach reliability and durability. Butzbach avoids high-maintenance and cost-intensive components, reducing running costs to a minimum. This is the most cost-effective approach in the long run.

Individual equipment options enable flexible modification to your specific operational requirements. These are the measure of all things. The horizontal NOVOSPRINT opening principle is the ideal solution for intralogistic processes. It meets the highest standards of efficiency, profitability and reliable protection.

Take advantage of our expertise in planning and consulting, which is the result of decades of experience and thousands of successfully realised projects.



The best high-speed door is unobtrusive".  
Disappearing at lightning speed when transit traffic approaches.



As individual as your business. NOVOSPRINT in all its forms.

## All expertise in one team

When you collaborate with Butzbach you are choosing much more than just a good industrial door. You will have a whole team of experts at your disposal whenever needed throughout the entire product lifecycle.

Like the consulting, planning and production, professional installation is exclusively provided by highly trained personnel. You will always have a reliable partner answering any queries regarding maintenance and service. Our customer service team responds quickly to ensure safe operation of your plant –in many countries worldwide directly through our local partners.

Whether for spare parts or maintenance contracts, Butzbach is a strong partner you can rely on.

**BUTZBACH - THE DOOR COMPANY.®**

# Butzbach solutions in their entire range



## Hubtore **SPACELITE®**

- Best light conditions in the building thanks to the translucent fibreglass filling
- Space-saving stacking opening technology
- Long-lasting, cost-effective and reliable operation thanks to the low-wear technology



## Sectional doors **SECTIOLITE®**

- High opening speed and combinable with other optional functions
- Best working conditions in the building thanks to translucent fibreglass filling
- Cost-effective, safe and reliable operation



## Sliding doors **HANGAR DOORS**

- Complete reliability and operational safety
- Best light conditions thanks to the translucent fibreglass filling
- Individual project support from the first draft to the aftersales service



## Fibreglass facades **VARIOPLANplus®**

- Innovative material combination: aluminium frame with fibreglass filling
- High transmission ratio, low dead weight, excellent thermal insulation properties and outstanding durability

# Facts and figures

## High-speed doors **NOVOSPRINT®**

Feature / door type		NOVOSPRINT® Syncro	NOVOSPRINT® Syncro L	NOVOSPRINT® Syncro XL	NOVOSPRINT® Mono	NOVOSPRINT® Duo
Performance data	Designed for opening cycles per year	350.000	350.000	150.000	350.000	350.000
	Continuous operation: opening cycles per hour	60	60	30	60	60
	Short-period operation max. 15 min: opening cycles per minute	6		3	6	6
	Opening speed standard	up to 3.5 m/s	up to 2.5 m/s	up to 2.0 m/s	up to 1.75 m/s	up to 1.75 m/s per side
	Opening speed SPRINT (only single skin)	up to 5 m/s	–	–	up to 2.5 m/s	–
	Closing speed standard	up to 1.5 m/s	up to 1.5 m/s	up to 1.5 m/s	up to 0.75 m/s	up to 0.75 m/s per side
	Closing speed with light curtain	up to 2.5 m/s	up to 1.5 m/s	–	up to 1.25 m/s	–
	Operating forces/safe opening acc. to EN 13241-1	yes	yes	yes	yes	yes
Wind load (side-dependent)	class 0-2	class 0	class 0-2	class 0-2	class 0-2	
Door size	Width min./max. (clear opening width)	1.000 / 5.300 mm	3.000 (2.400mm)* / 6.000 mm	3.800 / 9.000 mm	900 / 2.500 mm	1.800 / 5.300 mm
	Height min./max. (clear opening height)	1.700 / 4.500 / (5.000)* mm	2.100 / 5.100 mm	2.100 / 6.000 mm	1.700 / 3.500 mm	1.700 / 4.500 / (5.000)* mm
	Lintel requirement standard	330 mm	330 mm	480 or 880 mm	330 mm	330 mm
	Lateral space requirement for motor side / non-motor side	350 / 350 mm	350 / 350 mm	525 / 525 mm	425 / 35 or 350 / 135 mm	350 / 350 mm
	Space requirement total depth	420 or 520 / 550 mm	550 mm	650 or 690 mm	420 mm	520 / 550 mm
Material	Door skins: polyester fabric PVC-coated on both sides similar to RAL 1003, with vision element at a height of 1480 to 2000 mm	■	■	■	■	■
	Special variations: special colour, PVC-free, food-safe (FDA comparable), anti-static, highly inflammable B1, printable	□	□*	□	□	□
	Vision element at special height / special design	□	□	□	□	□
	Frame: head section, jambs and profiles RAL 9005	■	■	■	■	■
Drive/control	Drive unit with double brake	■	■	■	■	■ (2x)
	Drive unit with double brake (NO emergency opening lever – currentless opening)	□	□	□	□	□ (2x)
	Frequency converter control BDC E800 F, 230V / 50Hz	■	■	–	■	■ (2x)
	4K W frequency converter control 400V / 50Hz	–	–	■	–	–
	Emergency opening: with bowden cable lever – automatic opening	■	■	■	■	■ (2x)
Options	Floor sealing	□	□*	–	□	□
	Escape route: EER (height over 3.5 m on request)	□	–	□	□	–
	Crane rails	□	□	□	–	□
	Hygiene (stainless steel door frame)	□	–	–	□	–
	Airlocks	□	□	□	□	□
	Double-skinned	□	–	–	□	□
	Combined with stacking or sectional door	□	□*	□	□	□
	Sprint	□	–	–	□	□

■ Standard    □ Optional    \* On request

Not all options can be combined. Figures may vary depending on size, application and equipment.

Butzbach GmbH Industrietore | Weiherstraße 16 | 89293 Kellmünz (Germany)  
Tel. +49 8337 901-0 | [info@butzbach.com](mailto:info@butzbach.com) | [www.butzbach.com](http://www.butzbach.com)

**BUTZBACH - THE DOOR COMPANY.®**