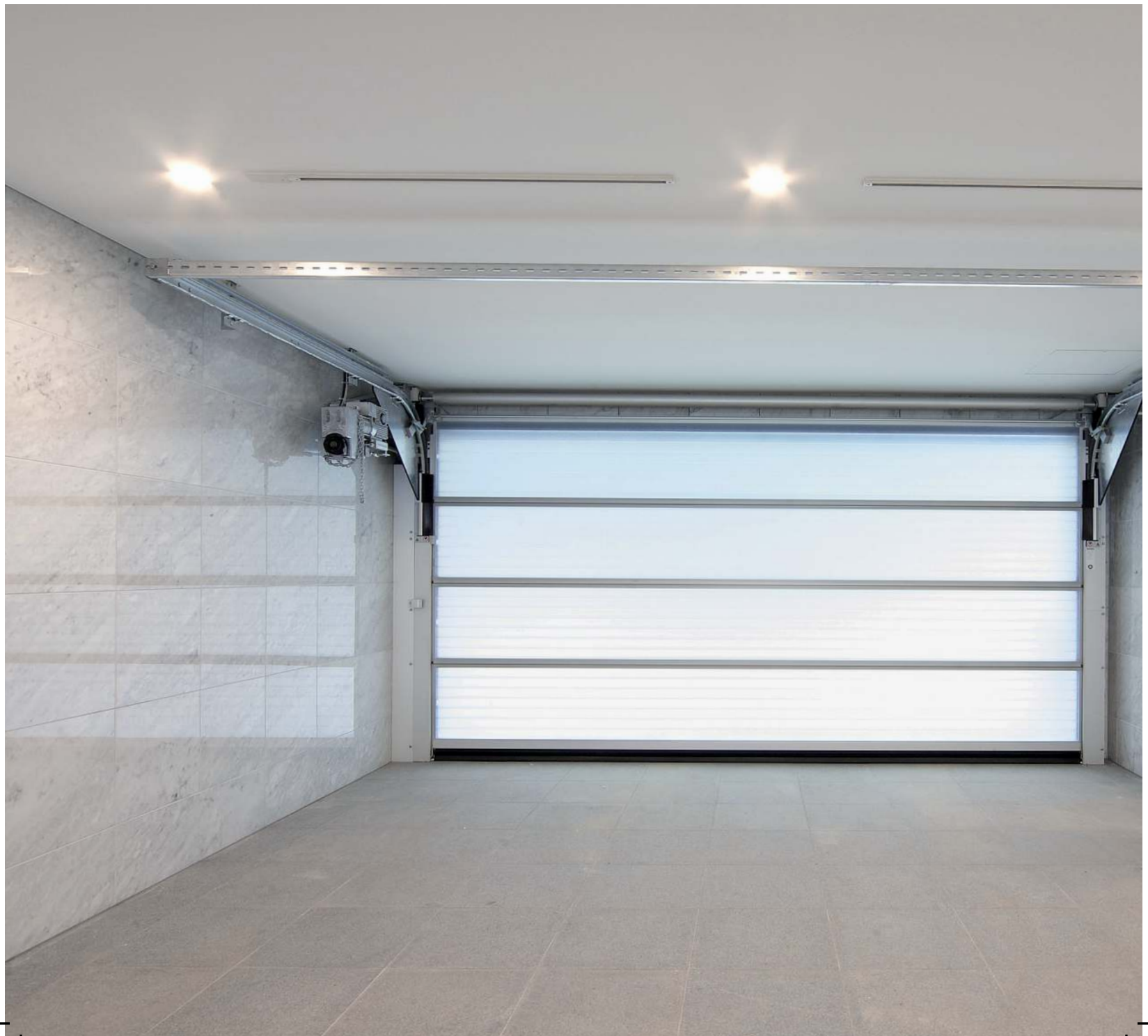


Highly versatile  
Sectional doors  
**SECTIOLITE®**

BUTZBACH - THE DOOR COMPANY.®





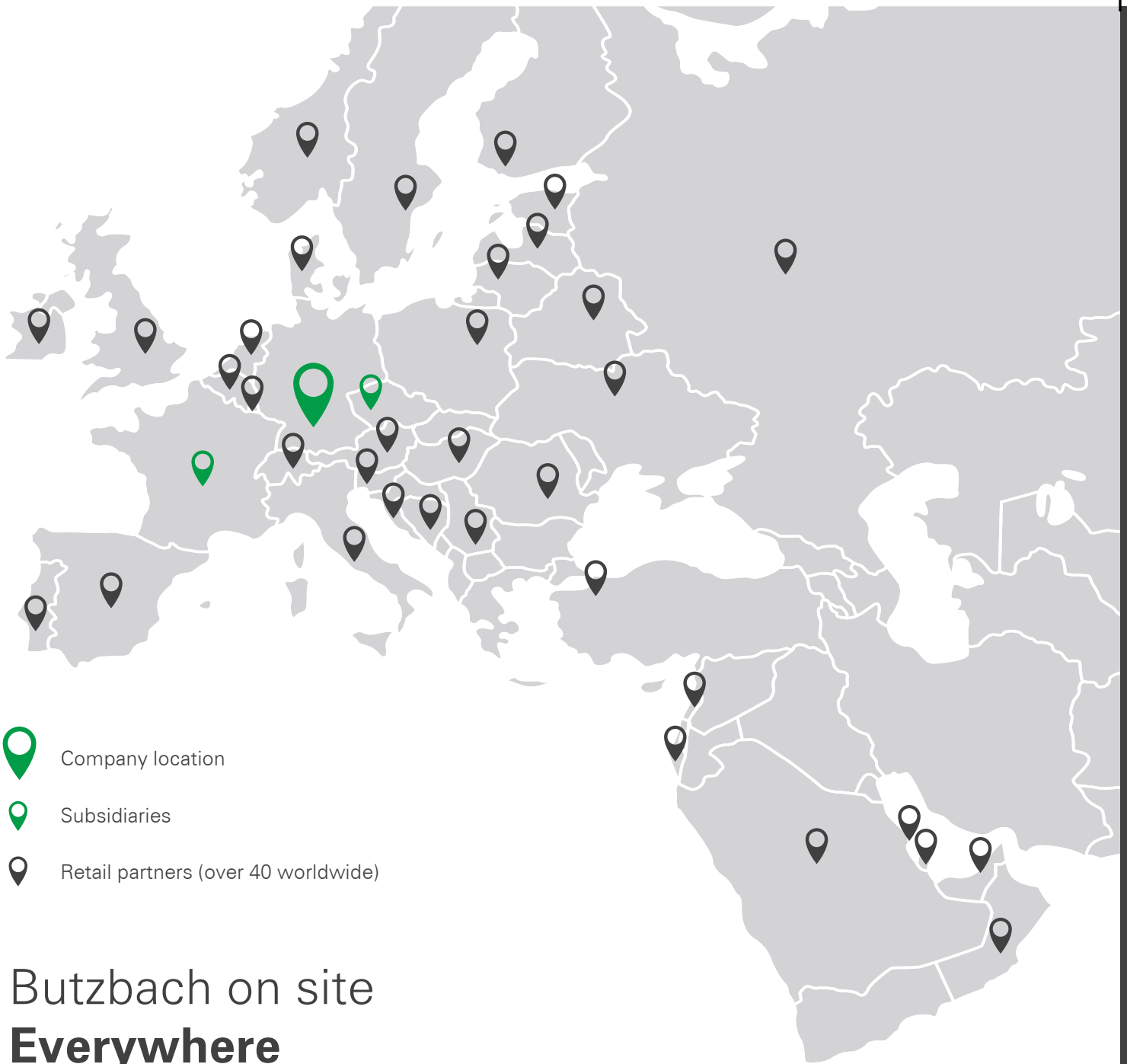
# The professional **sectional doors**




Butzbach is a German family-owned company founded in 1953 and is now being managed by the second generation. With over 350 employees, we are the specialist for industrial and hangar doors.

Butzbach has created the SECTIOLITE sectional door for special applications. The operating principle, construction, material choice and workmanship are designed for a robust industrial environment and up to 100,000 opening cycles per year. This ensures lasting reliability and efficiency.

You also benefit from our wealth of experience and a complete service from a single source. From the first step and planning to commissioning and service, Butzbach provides full support.





-  Company location
-  Subsidiaries
-  Retail partners (over 40 worldwide)

## Butzbach on site **Everywhere**

### Germany

Our company is based at two locations in southern Germany, combining established local roots with a cosmopolitan attitude and innovative spirit. Here we have highly qualified employees and a network of reliable suppliers at our disposal. Our support based in 25 sales regions across Germany guarantees direct support wherever you are.

### International

Butzbach has made a name for itself as a specialist developing and producing industrial doors. For decades, our doors have been delivering reliable service day in, day out at many companies worldwide. Our qualified partners ensure local support, the highest service quality and customer proximity.

# Proven to work in practice worldwide

## Sectional doors **SECTIOLITE®**

### **Freiburg (DE)**

Highway administration

16 SECTIOLITE doors with pedestrian access doors and facade elements were installed as part of a comprehensive renovation.

This improved the building's usable space and the light situation inside.



### **Gersthofen (DE)**

LEW

Pedestrian doors were integrated in the sectional doors as part of the renovation, as the narrow door openings did not allow any side entrances.



### **Copenhagen (DK)**

Airport

Two SECTIOLITE Sprint doors have been installed in the oversize baggage loading area. The high reliability is reflected by 130,000 openings in 24 months with no disruptions or downtime.



### **Tokyo (JP)**

Dyna-city Yakumo

Five SECTIOLITE doors have been installed in the garage area of the residential and commercial building. The translucent fibreglass floods the interior with light and creates an attractive facade.



N+T Architects Inc.

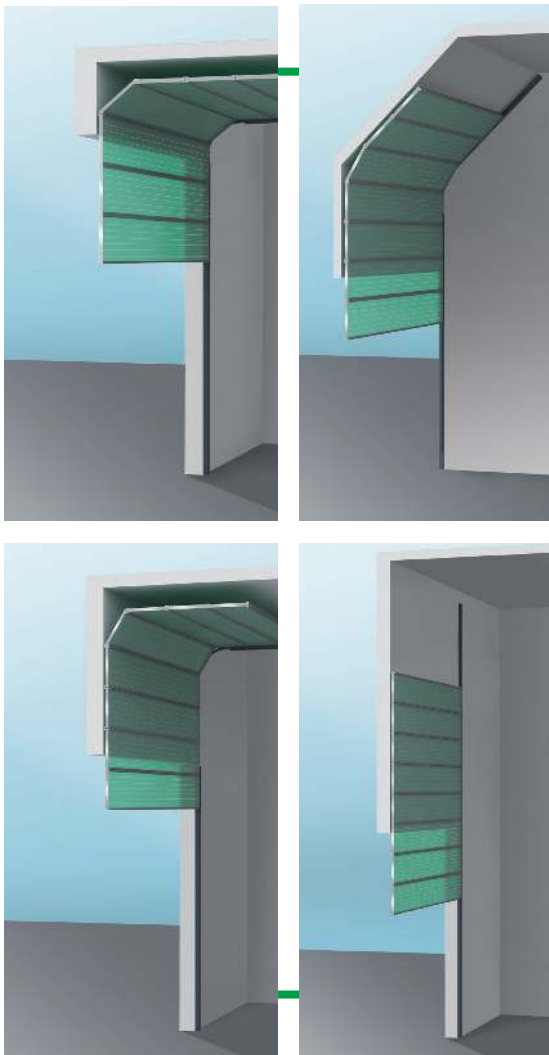
You can find more completed Butzbach projects at [www.butzbach.com](http://www.butzbach.com).

# When you expect more for your purposes

The SECTIOLITE sectional door can be used in situations with a low lintel height starting with 350 mm. The door size can be adapted to your needs with millimetre precision up to a width of 6.0 m and a height of 5.0 m.

The solid tracks guarantee the highest reliability and safety, as all important functional elements are integrated and protected. The door is closed on three sides, preventing interference with the mechanism.

The door opens and closes easily thanks to the low-maintenance electric motor. The anti-jamming protection using an opto-electronic sensor and the automatic lock once the door is closed also increase safety. SECTIOLITE even comes with WK3 certification for burglar resistance in the S version.



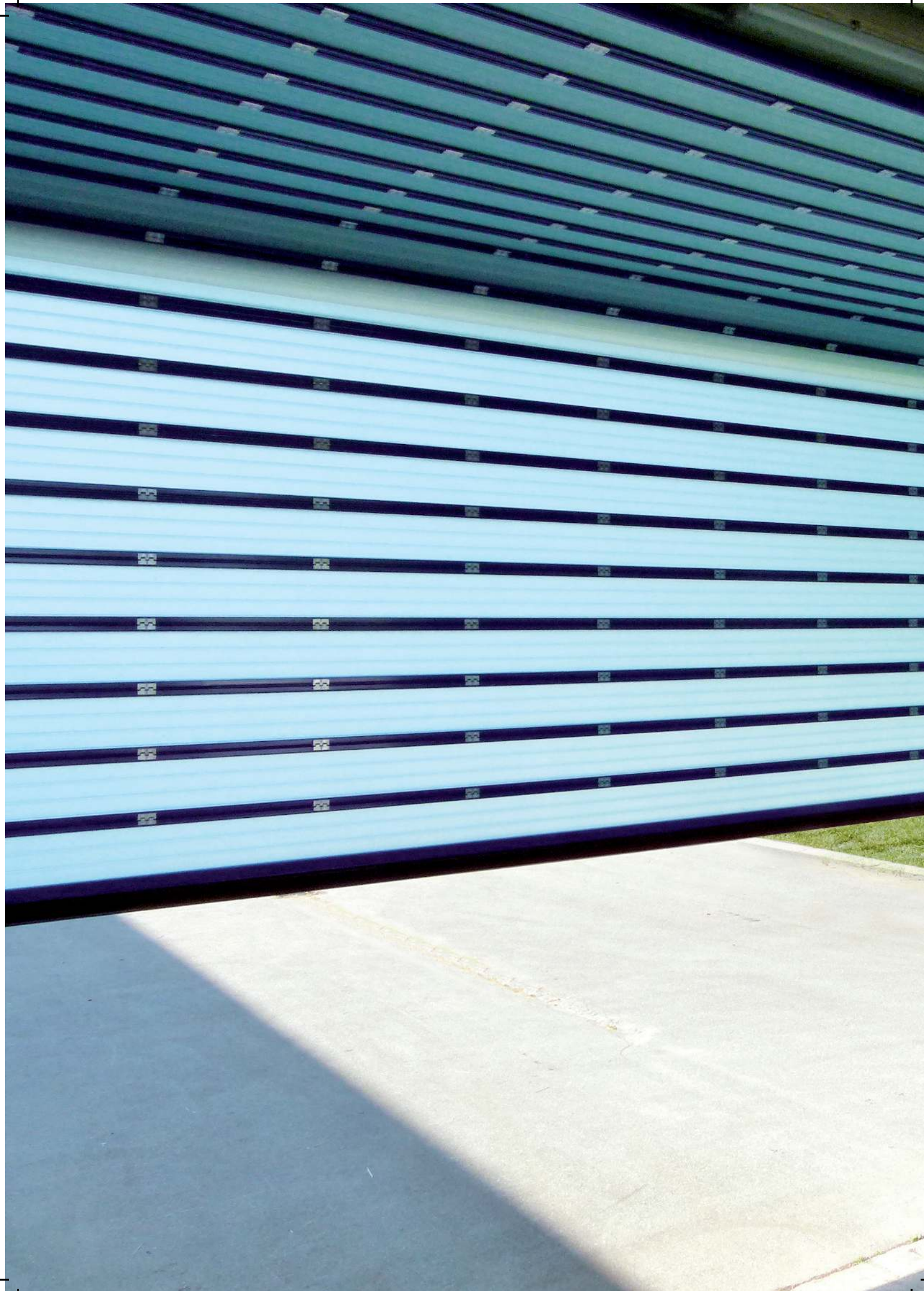
## Opening technology Sectional doors **SECTIOLITE**<sup>®</sup>

SECTIOLITE can be installed in different ways to suit the structural conditions and fitting situation:

- While opening, the door sections deflect under the ceiling and are fed into the building. This only requires a lintel height of 350 mm.
- SECTIOLITE adapts to the geometry of your ceiling by using rails guided along the roof.
- A higher deflection makes almost full use of the room height in the case of high lintels.
- SECTIOLITE can also be installed as a vertical door with no deflection if the space above the door opening allows it.



SECTIOLITE is the high-end sectional door in function and design for sophisticated demands.







## Design and **functionality**

We use fibreglass as the filling for our sectional doors – a material that is also used in shipbuilding and in the aerospace industry due to its positive features. Besides properties like stability, durability and strength, the most impressive thing about fibreglass is the light transmission ratio of up to 78 %. This results in bright

working areas, reducing the need for lighting during the day and creating a pleasant working environment.

The twin-walled design of the fibreglass sections achieves an excellent thermal insulation. The door system is completely sealed, preventing unnecessary energy losses and draughts in the building. The sectional door scores highly in terms of air permeability, resistance to wind load and water penetration.



# Special equipment

## Sectional doors **SECTIOLITE®**

### Pedestrian access door

The door within a door allows pedestrians to pass through quickly and safely without opening the main door. It also means less energy is lost. The door is extremely robust and has a low, almost barrier-free threshold.

### Wet and humid areas

With an additional equipment package the SECTIOLITE door can even be used in conditions prevalent in car washes, for example, providing reliable service throughout the year. It looks the same as the standard design, helping to create a perfect uniform building design.

### Sprint

The Sprint option delivers an impressive opening speed of up to 1.5 m/s. Despite the high speed, signs of wear are very low even in continuous use.

### Storm

Of particular interest in coastal regions or the mountains. This option continues to work reliably even in winds of force 12 (hurricane).

### Security with WK3 certification

Specially developed for industrial buildings with high security requirements for burglary resistance. The door achieves a resistance class of WK3 and is certified in accordance with DIN.



# High quality High performance

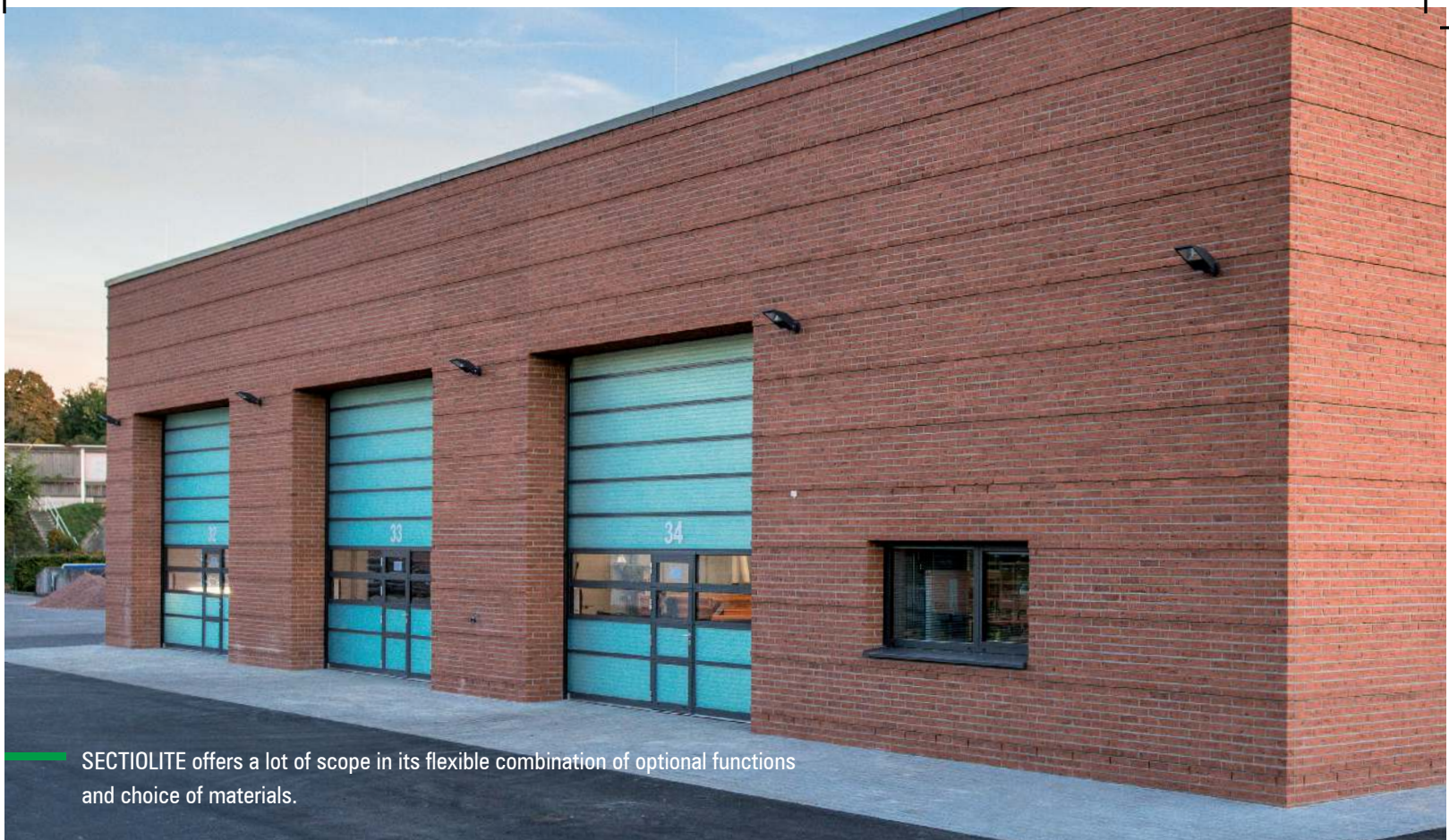
Butzbach industrial doors facilitate smooth flows and efficient operating processes. The low-wear door technology and the high "Made in Germany" quality deliver the proverbial Butzbach reliability and durability. Butzbach avoids high-maintenance and cost-intensive components, reducing running costs to a minimum. This is the most cost-effective approach in the long run.

Individual equipment options enable flexible modification to your precise operational requirements. They are the measure of all things. The SECTIOLITE sectional door is the ideal solution for widths up to 6.0 m and heights up to 5.0 m. It meets the highest standards of efficiency, profitability and reliable protection.

Take advantage of our expertise in planning and consulting. It is the result of decades of experience and thousands of successful projects.



Your sectional door harmonises perfectly with your design thanks to the additional use of Butzbach VARIOPLANplus facade panels.



SECTIOLITE offers a lot of scope in its flexible combination of optional functions and choice of materials.

## All expertise in one team

When you collaborate with Butzbach you are choosing much more than just a good industrial door. You will have a whole team of professionals at your disposal whenever you need us throughout the entire period of use.

Like the consulting, planning and production, professional installation is exclusively provided by highly trained personnel. You will always have a reliable partner to answer any queries, including for maintenance and service. Our customer service team respond quickly to ensure the secure operation of your plant – direct in many countries worldwide thanks to our local partners.

Whether for spare parts or maintenance contracts, Butzbach is a strong partner you can rely on.

**BUTZBACH - THE DOOR COMPANY.®**

# Butzbach solutions in all their variety



## Stacking doors **SPACELITE®**

- Best light conditions in the building thanks to translucent fibreglass filling.
- Space-saving stacking technology.
- Long-lasting cost-effective and reliable operation thanks to low-wear technology.



## High-speed doors **NOVOSPRINT®**

- Side opening for double speed and a clear increase in safety.
- Up to 350,000 openings per year: developed for the highest demands and frequency of use.
- Innovative durability, reliability and efficiency.



## Sliding doors **HANGAR DOORS®**

- Complete reliability and operational safety.
- Best light conditions thanks to translucent fibreglass filling.
- Individual project support from the first draft to the aftersales service.



## Fibreglass facades **VARIOPLANplus®**

- Innovative material combination: aluminium frame with fibreglass filling.
- High transmission ratio, low dead weight, excellent thermal insulation properties and outstanding durability.

You will find more information at [www.butzbach.com](http://www.butzbach.com).

# Facts and figures

## Sectional doors **SECTIOLITE®**

Feature / door type		SECTIOLITE® ST40	SECTIOLITE® ST40T (mit Tür)	SECTIOLITE® ST40S	SECTIOLITE® ST40S SECURITY	SECTIOLITE® ST40S SPRINT
Performance data	Designed for opening cycles per year (control-dependent)	50.000 / 100.000	50.000 / 50.000	50.000 / 100.000	50.000 / 100.000	- / 100.000
	Continuous operation: opening cycles per hour (control-dependent)	10 / 20	10 / 20	10 / 20	10 / 20	- / 30
	Wind load acc. to EN 12424	class 2-5	class 2-3	class 3-5	class 3-5	class 3-5
	Air permeability acc. to EN 12426	class 4	class 3	class 4	class 4	class 4
	Watertightness in heavy rain acc. to EN 12425	class > 3	class 3	class > 3	class > 3	class > 3
	Airborne noise insulation acc. to EN ISO 717-1 approx.	23 dB	24 dB	24 dB	24 dB	24 dB
	Burglar resistance WK3 acc. to DIN V ENV 1627	-	-	-	■	-
	Opening speed up to (standard/optional)	0.25 / 1.0 m/s	0.25 / 0.6 m/s	0.25 / 1.0 m/s	0.25 / 1.0 m/s	1.5 m/s
Operating forces/safe opening acc. to EN 13241-1 Wind load (size-dependent)	achieved	achieved	achieved	achieved	achieved	
Door size	Width min./max.	1.000 / 6.000 mm	2.500 / 5.500 mm	1.000 / 6.000 mm	2.000 / 6.000 mm	2.000 / 4.500 mm
	Height min./max.	2.000 / 5.000 mm	2.800 / 5.000 mm	2.000 / 5.000 mm	2.000 / 5.000 mm	2.000 / 5.000 mm
	requirement (low/standard)	350 / 800 mm	400 / 800 mm	350 / 800 mm	800 mm	350 / 800 mm
	Single door panel height approx.	500 mm	500 mm	250 mm	250 mm	250 mm
Material	Twin-walled fibreglass panels, installation thickness in mm	40 mm	40 mm	40 mm	40 mm	40 mm
	Insulation value Up up to	1,4 W/m²K	1,4 W/m²K	1,4 W/m²K	1,4 W/m²K	1,4 W/m²K
	Light transmission up to	47 - 78 %	47 - 78 %	47 - 78 %	47 - 78 %	47 - 78 %
	Fire performance acc. to EN 13501/protection class acc. to DIN 4102	E/B2	E/B2	E/B2	E/B2	E/B2
	Vision element panel with SAN plastic glazing, with 1-4 inter-spacers depending on door width, with hard coat finish	□	□	□	-	□
	Vision element panel with polycarbonate PC plastic glazing, with 1-4 inter-spacers depending on door width	-	-	-	□	-
	Solid aluminium tracks closed on three sides	■	■	■	■	■
	Steel door cassette, electrogalvanised	■	■	■	■	■
	Insertion foils to improve thermal insulation value	□	□	□	□	□
Drive/control	Worm gear motor with brake and integrated anti-drop device	■	■	■	■	■
	Contact control 400V/50Hz, BDC E800R	■	■	■	■	-
	Frequency converter control 230V/50Hz, BDC E800F	□	□	□	□	-
	4 KW Frequency converter control 400V/50Hz	□	□	□	□	■
	Emergency opening: with hoist chain	■	■	■	■	■
	Emergency opening with uninterruptible power source (BOS)	on request	on request	on request	on request	on request
Options	Wet area (e.g. car wash)	□	□	□	-	□
	Humid area (e.g. car wash)	□	□	□	-	□
	Fibreglass lintel cover	□	□	□	-	□

■ Standard □ Optional

Not all options can be combined. Figures may vary depending on size, application and equipment

Butzbach GmbH Industrietore | Weiherstraße 16 | 89293 Kellmünz (Germany)  
Tel. +49 8337 901-0 | [info@butzbach.com](mailto:info@butzbach.com) | [www.butzbach.com](http://www.butzbach.com)

**BUTZBACH - THE DOOR COMPANY.®**