


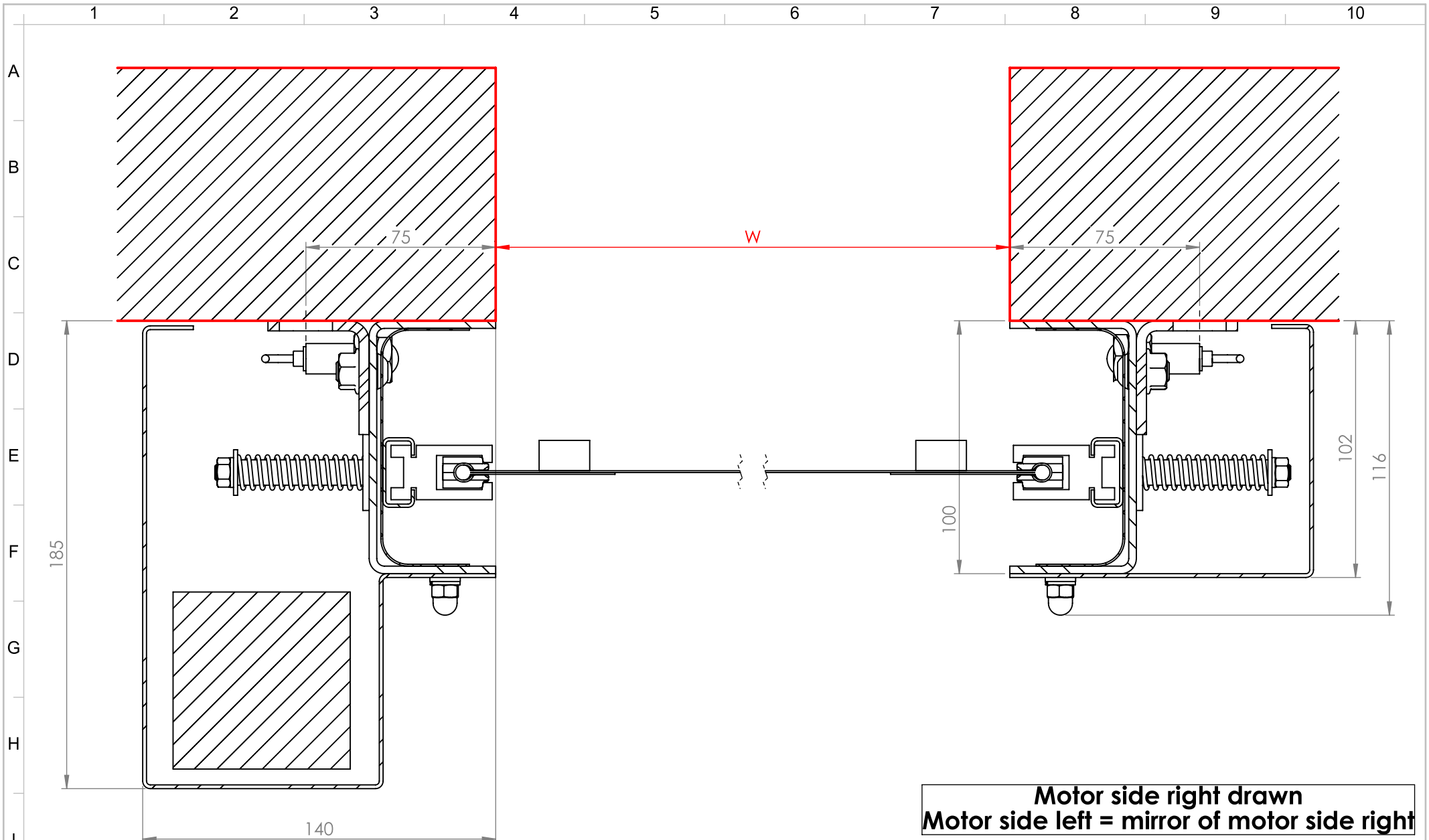
DY/BF-P77-V15A REV 05, Date: 21/11/2017

This Information is Confidential




©All rights reserved by Entrematic Belgium

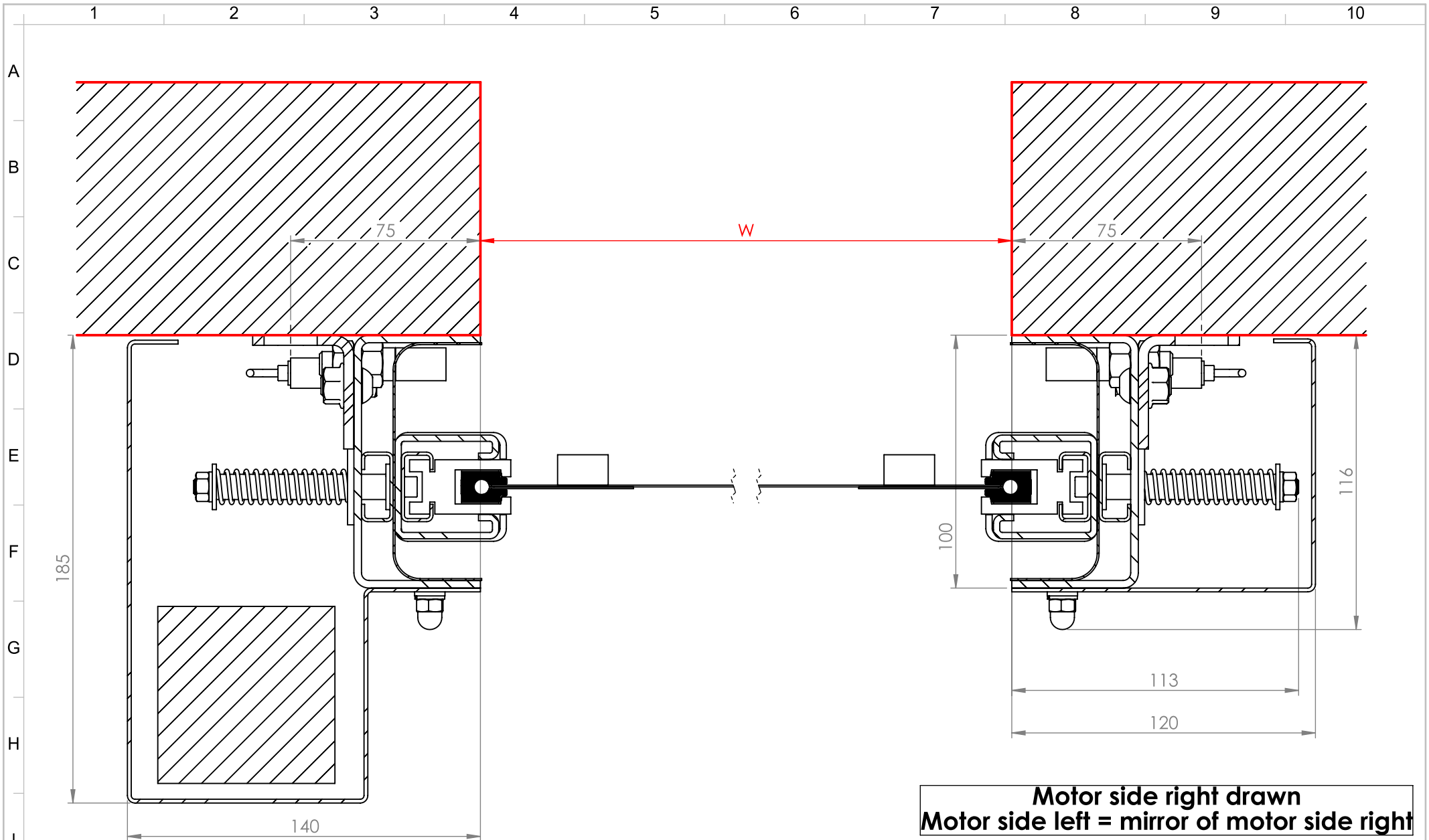
File: 1413-0264	Rev: 01	Drawn By: L. Heymans	Date: 4/07/2014	 ENTRE//MATIC
Description: M3 Fixation points	Approved By: C. Fauquette	Scale: 1:30	Size: A4	
Rev	Change	Date	By	General tolerances ISO 2768-mK-E DIN 6930 DIN 6935

© All rights reserved by Dynaco





Motor side right drawn
Motor side left = mirror of motor side right

File: 1413-0262	Rev: 2	Drawn By: L. Heymans	Date: 17/03/2016	 DYNACO  ENTRE//MATIC								
Description: M3 Side guide section view Compact & Power		Approved By: C. Fauquette	Scale: Size: 1:2 A4									
		<table border="1"> <thead> <tr> <th>Rev</th> <th>Change</th> <th>Date</th> <th>By</th> </tr> </thead> <tbody> <tr> <td>2</td> <td>Capped nut removed</td> <td>17/03/16</td> <td>LHE</td> </tr> </tbody> </table>	Rev	Change	Date	By	2	Capped nut removed	17/03/16	LHE	General tolerances ISO 2768-mK-E DIN 6930 DIN 6935	
Rev	Change	Date	By									
2	Capped nut removed	17/03/16	LHE									



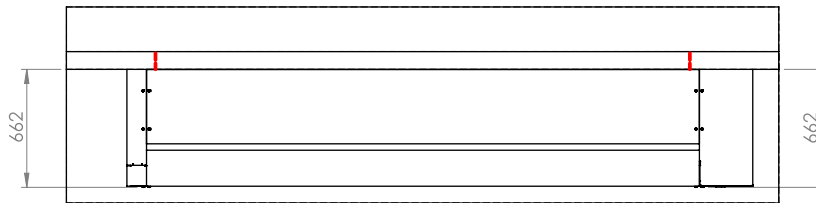
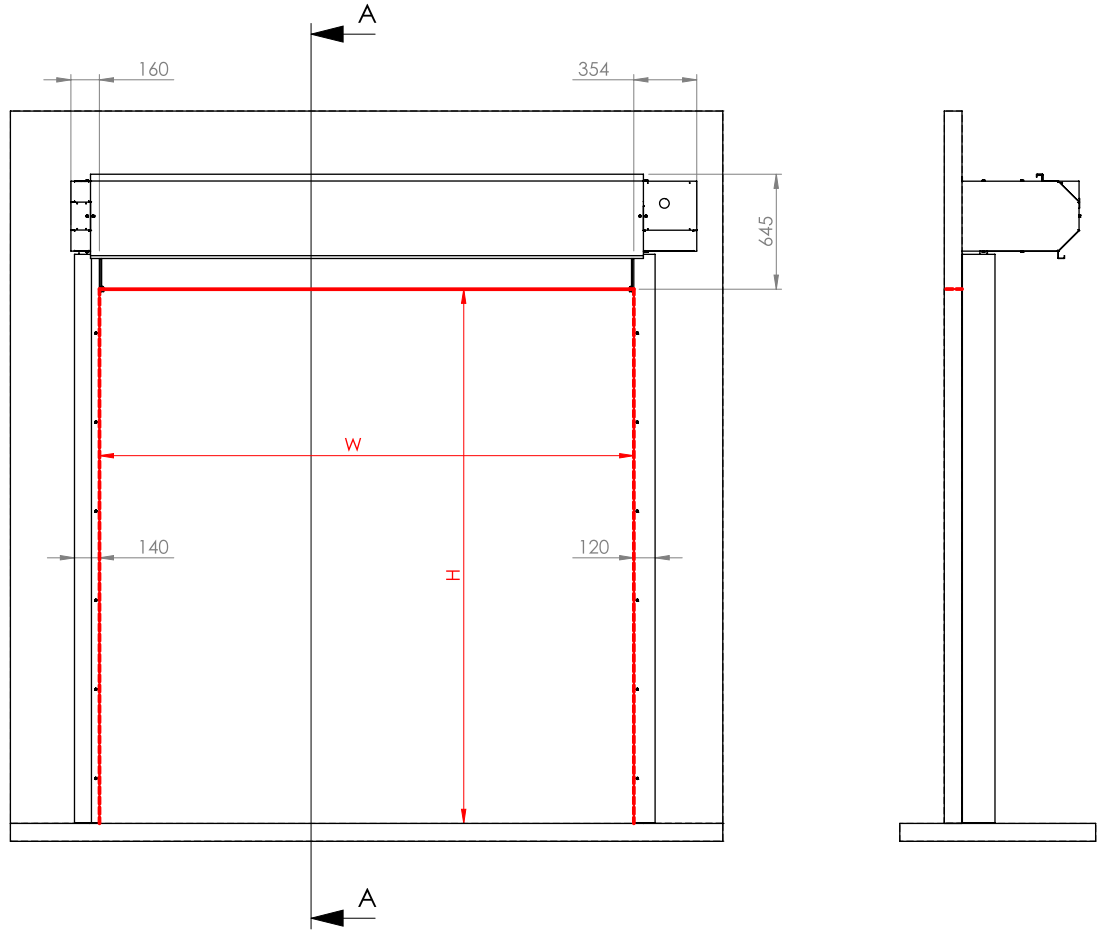
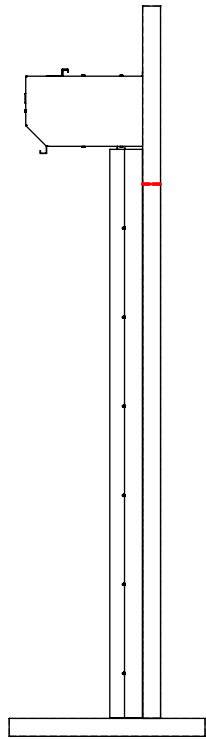
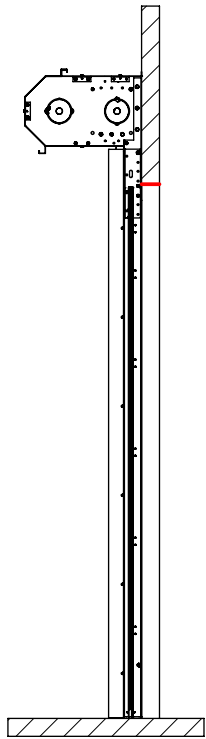
Motor side right drawn
Motor side left = mirror of motor side right

File: 1413-0267	Rev: 3	Drawn By: L. Heymans	Date: 17/03/2016	 ENTRE//MATIC												
Description: M3 Side guide section view All-Weather		Approved By: C. Fauquette	Scale: Size: 1:2 A4													
		<table border="1"> <thead> <tr> <th>Rev</th> <th>Change</th> <th>Date</th> <th>By</th> </tr> </thead> <tbody> <tr> <td>2</td> <td>Added C-profile</td> <td>11/03/16</td> <td>LHE</td> </tr> <tr> <td>3</td> <td>Domed cap became regular nut</td> <td>17/03/16</td> <td>LHE</td> </tr> </tbody> </table>	Rev	Change	Date	By	2	Added C-profile	11/03/16	LHE	3	Domed cap became regular nut	17/03/16	LHE	General tolerances ISO 2768-mK-E DIN 6930 DIN 6935	
Rev	Change	Date	By													
2	Added C-profile	11/03/16	LHE													
3	Domed cap became regular nut	17/03/16	LHE													



DY/BF-P77-V15A REV 05, Date: 21/11/2017

This Information is Confidential

©All rights reserved by Entrematic Belgium

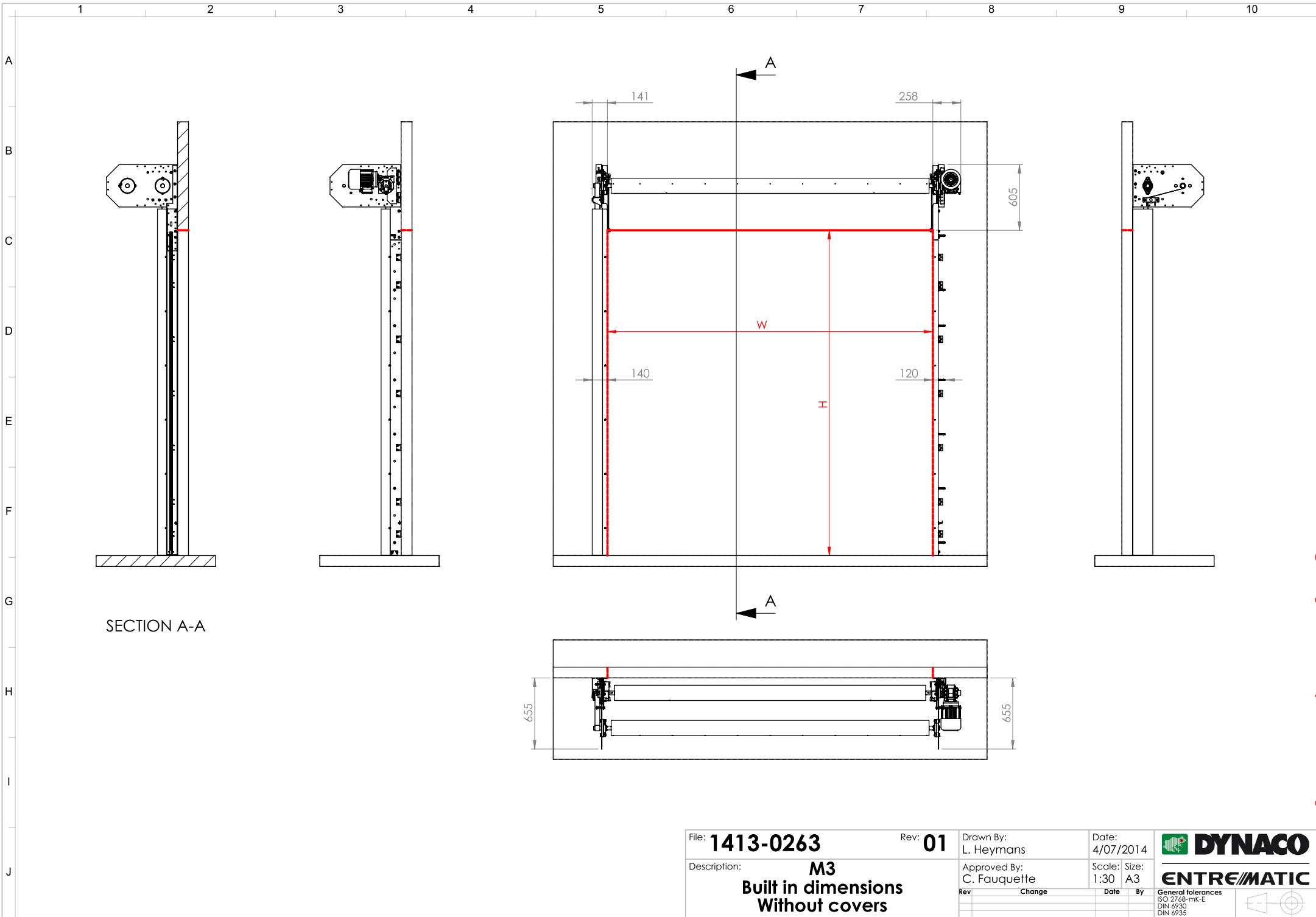


SECTION A-A

File: 1413-0136	Rev: 02	Drawn By: L. Heymans	Date: 3/07/2014	 
Description: M3 Built in dimensions With covers		Approved By: C. Fauquette	Scale: Size: 1:30 A3	
Rev: 02	Change: New-layout	Date: 03/07/14	By: LHE	General Tolerances ISO 2768-mK-E DIN 6930 DIN 6935



© All rights reserved by Dynaco

DYKBE-P77-V15A REV 05, Date: 21/11/2017



This Information is Confidential

©All rights reserved by Entrematic Belgium

File: 1413-0263	Rev: 01	Drawn By: L. Heymans	Date: 4/07/2014	 
Description: M3 Built in dimensions Without covers		Approved By: C. Fauquette	Scale: 1:30 Size: A3	
Rev	Change	Date	By	General Tolerances ISO 2768-mK-E DIN 6930 DIN 6935

© All rights reserved by Dynaco